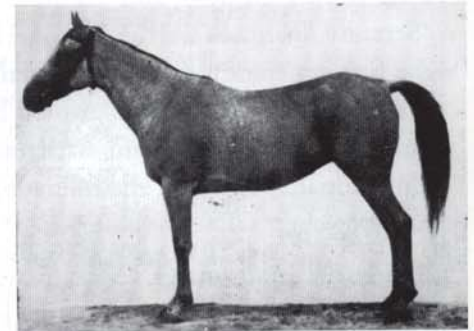


HI: The Venus (KDV) family to the daughters of Bint Hadba El Saghira (KDV)

First generation	Second generation	Third generation	Fourth generation	Fifth generation
VENUS (KDV) ca.1890 c FOUNDATION YUNIS CLAN of the ZAUBA-SHAMMAR	HADBA (KDV) 1894 c [x SAKLAWI I (APS)] S+ Khedive ABBAS PASHA HILMI II / Egypt	GAMILA (KDV) ca. 1900 c [x EL SENNARI (KDV)] HS2 Khedive ABBAS PASHA HILMI II / Egypt	BINT GAMILA (KDV) 1911 g [x IBN NADRA (KDV)] DS1.1 Khedive ABBAS PASHA HILMI II / Egypt	2 sons: IBN RABDAN (RAS), BAIYAD (RAS)
		BINT HADBA EL SAGHIRA (KDV) 1912 c [x EL HALABI (KDV)] S5 Khedive ABBAS PASHA HILMI II / Egypt	SAMIHA (RAS) BINT RUSTEM (RAS)	— HI.1 — HI.2

HI.1: The Bint Hadba El Saghira (KDV) family through Samiha (RAS) — extant through Bint Samiha's son Nazeer (RAS)

First generation	Second generation	Third generation
SAMIHA (RAS) 1918 c [x SAMHAN (MNL)] S3 RAS / Egypt	BINT SAMIHA (RAS) 1925 b [x KAZMEEN (BLT)] KJ1 RAS / Egypt	son: NAZEER (RAS)



Bint Gamila (KDV) (1911-1924) gray mare extant within Heirloom only through her sons Ibn Raddan (RAS) and Baiyad (RAS). RAS Root Mare #5, Heirloom Horizon Horse. (RAS Studbook photograph)

HI.2: The Bint Hadba El Saghira (KDV) family through Bint Rustem (RAS) to the daughters of Hind (RAS) and Salwa (RAS)

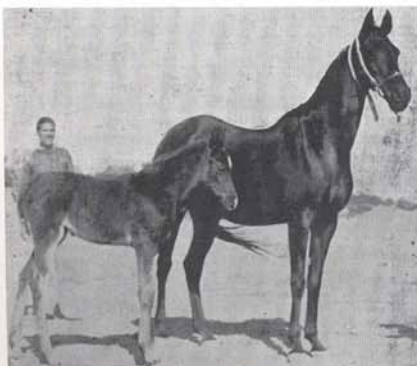
First generation	Second generation	Third generation
BINT RUSTEM (RAS) 1922 b [x RUSTEM (BLT)] KR.4.S RAS / Egypt	HIND (RAS) 1929 b [x IBN RABDAN (RAS)] HI RAS / Egypt	YOSREIA (RAS)
	SALWA (RAS) 1939 k [x IBN RABDAN (RAS)] HI RAS / Egypt	LATEEFA (RAS)

— HI.2A

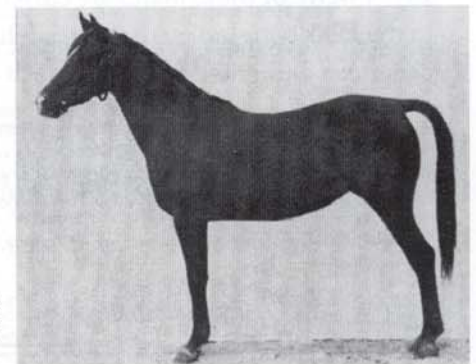
— HI.2B

HI.2A: The Hind (RAS) family through Yosreia (RAS) to the daughters of Bint Masarra

First generation	Second generation	Third generation	Fourth generation	Fifth generation	Sixth generation
YOSREIA (RAS) 1943 g [x SHEIKH EL ARAB (RAS)] DS1.2 RAS / Egypt	SHAHRZADA (EAO) 1955 g [x NAZEER (RAS)] HI.1 EAO / Egypt	BINT EL NIL (EAO) 1963 c [x ANTER (INS)] S1.1A EAO / Egypt	MASARRA 1972 c [x *TUHOTMOS] S3.1 EAO / Egypt	BINT MASARRA 1977 c [x *TUHOTMOS] S3.1 LOWE, BILL & JANET	AK SHESARRA SHALLIMAR BEDU SHAHRZADA 3 sons
	BINT YOSREIA (EAO) 1959 g [x NAZEER (RAS)] HI.1 EAO / Egypt	YOSR (EAO) 1969 g [x KORAYEM (RAS)] DS1.1A HAMDAN STABLES / Egypt	son: SADEK (SAUDI) (no Heirloom progeny)		— HI.2Aa — HI.2Ab — HI.2Ac — HI.2Ad.S



Bint Rustem (RAS) (1922-1942) bay mare and foal, progenitor of the living Hadban-Inzibi strain. (RAS Studbook photograph)



Samiha (RAS) (1918-1927) chestnut mare extant within Heirloom only through her grandson. (RAS Studbook photograph)

HI.2Aa: The Bint Masarra family through AK Shesarra

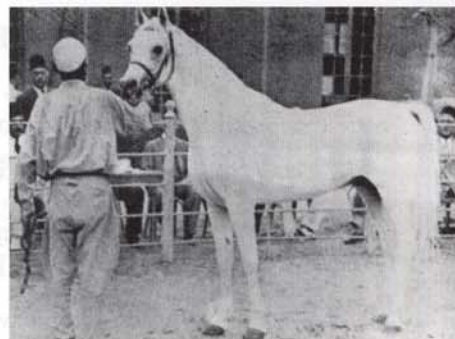
First generation	Second generation	Third generation
AK SHESARRA 1984 g [x ANSATA EL SHERIF] DS1.2H MOGULL, IVAN	HADBAH HALIMA 1989 g [x RAADIN INSHALLA] S1.1Ab RISER, F R or J L GORMLEY	son: FABAH HALIM
	JA HADBAELSAGHIRA 1993 g [x HALLANNY MISTANNY] DS1.2Ad RISER, F R or J L GORMLEY	
	SRF SHERILEE 1994 g [x JUBILEE HALIMA] DS1.1Cd EGER, DON & RHONDA	
	SRF LEXILEE 1995 g [PENDING] [x JUBILEE HALIMA] DS1.1Cd EGER, DON & RHONDA	
	SRF SHEZADAMONIET 1997 g [x RASMONIET RSI] S3.1H.S EGER, DON & RHONDA	
	REA BINT SHESARRA 1998 g [x APPLE HILLEL NISR] DS1.1Cb MYERS, DAVID L	



Ibn Rabdan (RAS) (1917-1944) chestnut stallion (Rabdan El Azrak [APK] x Bint Gamila [KDV]), racehorse and leading sire. (RAS photograph, courtesy of the Joe Ferriss collection)

HI.2Ab: The Bint Masarra family through Shallimar Bedu

First generation	Second generation
SHALLIMAR BEDU 1989 g [x RAADIN INSHALLA] S1.1Ab RISER, F R or J L GORMLEY	VENUS INZHIYAH 1995 b [x IBN LOTHAR] DS1.2Bb.S FIPPEN, E A or J W
	ABBAS ALIYA 1998 g [x IBN LOTHAR] DS1.2Bb.S FIPPEN, E A or J W
	son



Nazeer (RAS) (1934-1960) gray stallion (Mansour [RAS] x Bint Samiha [RAS]), racehorse and leading sire. (RAS Studbook photograph)

HI.2Ac: The Bint Masarra family through Shahrzada

First generation	Second generation
SHAHRZADA 1990 b [x IBN LOTHAR] DS1.2Bb.S FIPPEN, E A or J W	son: SHARJAH BEDU

HI.2Ad.S: The sons of Bint Masarra

3 sons: HADBAN EL SAREEI, IBN RABDAN USA, WK HALIM ELHADBAN
--



Ashour (EAO) 1971 gray stallion by Anter (INS), extant within Heirloom only through his son Sadek (SAUDI), the only living pure-in-the-strain Heirloom Hadban-Inzih horse as of 2002. (Kiah Larson photograph, courtesy of the Khamsat archives)

HI.2B: The Salwa (RAS) family through Lateefa (RAS) — extant through Ayda (EAO)'s son Ashour (EAO)

First generation	Second generation	Third generation
LATEEFA (RAS) 1945 g [x GAMIL III (RAS)] S1.3 (KJ1) RAS / Egypt	AYDA (EAO) 1954 g [x NAZEER (RAS)] HI.1 EAO / Egypt	son: ASHOUR (EAO)