

**ZB: The Zobeyni (AP) sire line to the sons of Mesaoud (APS)**

First generation	Second generation	Third generation	Fourth generation	Fifth generation	Sixth generation	Seventh generation	Eighth generation
ZOBAYNI (AP) ca. 1844 g FOUNDATION [Db Stallion "BARQ" x Db S-Jidranayah (Ibn Subayni) *SNUNAH] S2+ BARRAK IBN SUBAYNI of the MHAYD-FID'AN	HARKAN (AP) ca.1855 g [x HARKA (AP)] KH ABBAS PASHA / Egypt	AZIZ (APS) ca.1876 c [x AZIZA (APS)] DS2 ALI PASHA SHERIF / Egypt	NASR (APS) ca. 1886 b [x BINT AZZ (APS)] DS2 ALI PASHA SHERIF / Egypt MESAOU (APS) 1887 c [x YEMAMEH (APS)] S1.4.S ALI PASHA SHERIF / Egypt	daughter: <b>KASIDA (APS) [KJ1]</b>			
				REJEB (BLT)	ZB.1		
				SEYAL (BLT)	ZB.2		
				DAOUD (BLT)	ZB.3		
				NARKISE (BLT)	ZB.4		
				*ASTRALED	ZB.5		
				HARB (BLT)	ZB.6		
				*ABU ZEYD	ZB.7		
				3 daughters	ZB.8.D		
				JAMIL (APS) 1896 c [x BINT JAMILA (APS)] S2A ALI PASHA SHERIF / Egypt			RASHEED (KED) 1917 g [x ZAREEFA (BLT)] S1.1A BLUNT, Lady ANNE / Egypt 3 daughters: DS9, S1.1A, S1.2
3 daughters: DS4, S1.1, S1.2							
	WAZIR (APS) 1863 g [x GHAZIEH (AP)] S1 ALI PASHA SHERIF / Egypt	NADER EL KEBIR (APS) 1871 g [x SAMHA (AP)] S2A FOUNDATION ALI PASHA SHERIF / Egypt	daughter: <b>NADRA EL KEBIRA (KDV) [DS1.1]</b>				
	MAHRUSS (APS) ca.1875 g [x MAHROUSSA (APS)] W ALI PASHA SHERIF / Egypt	MAHRUSS (BLT) 1893 c [x BINT NURA (BLT)] DS4 ALI PASHA SHERIF / Egypt	RIJM (BLT) 1901 c [x *ROSE OF SHARON] KR BLUNT, Lady ANNE / UK (England)	*NASIK 1908 b [x NARGHILEH (BLT)] KD BLUNT, WILFRID / UK 3 daughters: KD (2), KR.3	RASIK 1929 c [x *RASIMA] KR.1 KELLOGG, W K	daughter: <b>RABANNA [S4]</b>	
	MERZUK (APS) 1887 c [x BINT JELLABIET FEYSUL (EGY)] KJ1 ALI PASHA SHERIF / Egypt	daughter: <b>RIDAA (BLT) [KR]</b>					
	*SHAHWAN 1887 g [x DAHMEH SHAHWANIYAH (APS)] DS6 ALI PASHA SHERIF / Egypt	daughter: <b>YASHMAK (BLT) [KJ3]</b>					
	3 daughters: DS2, HS1, KJ1						
	4 daughters: DS2, DS4, S1 (2)						

**ZB.1: The Mesaoud (APS) sire line through Rejeb (BLT) — extant through Rejeb's daughters \*Narda II and Rose of Hind (BLT)**

First generation	Second generation
REJEB (BLT) 1897 c [x ROSEMARY (BLT)] KR BLUNT, WILFRID / UK	2 daughters: <b>*NARDA II [KD], ROSE OF HIND (BLT) [KR.1]</b>

**ZB.2: The Mesaoud (APS) sire line through Seyal (BLT) to the sons of Ghadaf**

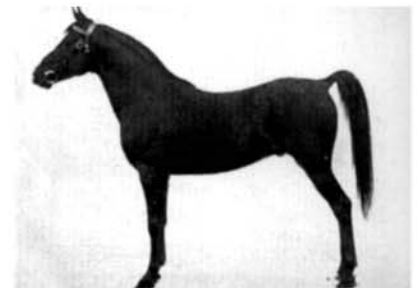
First generation	Second generation	Third generation	Fourth generation	Fifth generation	Sixth generation	Seventh generation	Eighth generation
SEYAL (BLT) 1897 g [x SOBHA (APS)] HS1 BLUNT, WILFRID / UK (England)	*BERK 1903 b [x BUKRA (BLT)] S4 BLUNT, Lady ANNE & WILFRID / UK (England)	HAMRAN (BLT) 1915 b [x HAMASA (BLT)] S1.1C CRABBET STUD / UK (England) RIBAL 1920 c [x *RIJMA] KR.3 BROWN, W R	HAMRAN II (RAS) 1930 c [x DURRA (BLT)] DS9 RAS / Egypt GHADAF 1929 c [x GULNARE] S1.1A BROWN, W R GHAWI 1930 c [x GULNARE] S1.1A BROWN, W R daughter: S4	daughter: <b>HELWA (RAS) [DS1.1A]</b>			
				JADIB	ZB.2A		
				SUBANI	ZB.2B		
				GHADAB	ZB.2C	— Sheradu in 1996	
				JOHN DOYLE	ZB.2D		
				ARDAN	ZB.2E		
				5 daughters	ZB.2F.D		
				daughter: <b>VALIDA [S1.1B]</b>			



*Ghadaf (1929-1957) in old age, whose dam and paternal granddam are also tail male to Zobeyni. (Courtesy of the Doyle Family collection)*



*Bred in New Hampshire, Ribal stood at stud in Indiana before ending his career at Long Meadow Ranch in Arizona. (AHR Studbook photograph)*



*Hamran (BLT) (1915-1932), RAS Root Stallion #23, is represented in Heirloom by his granddaughter Helwa (RAS). (RAS Studbook photograph)*